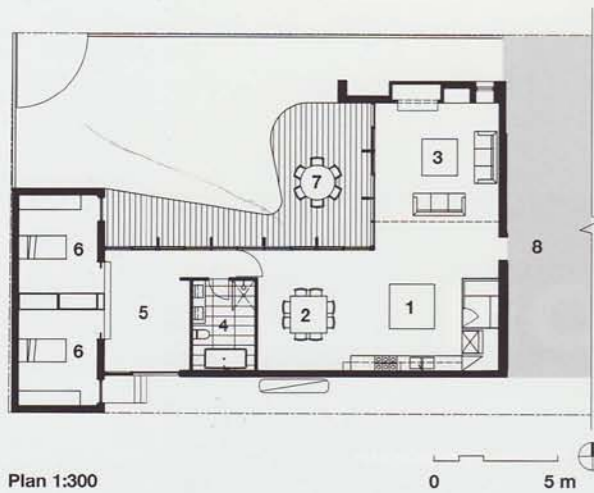


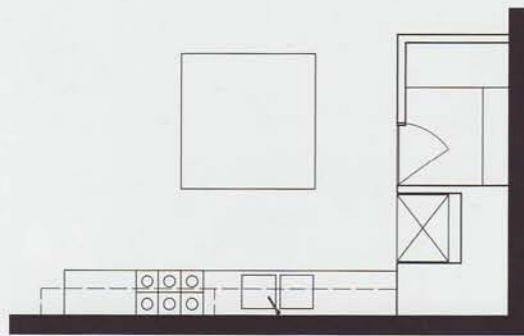
# CHEF DE MAISON

Architect Clare Cousins rejuvenates a Californian bungalow in Melbourne for a family who eats and plays together. **Story by Jenna Reed Burns Photography by Shannon McGrath**

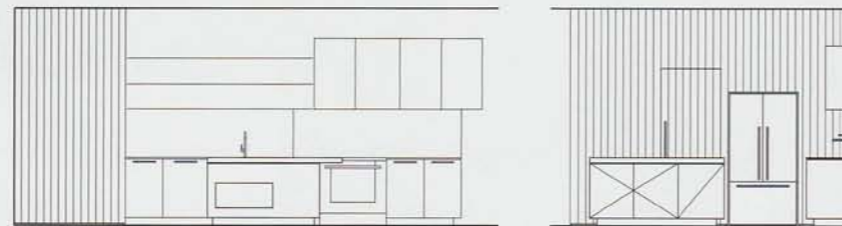


- 1 Kitchen
- 2 Dining
- 3 Living
- 4 Bathroom
- 5 Playroom
- 6 Bedroom
- 7 Deck
- 8 Existing house

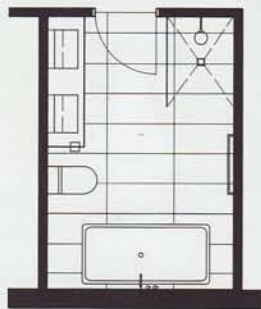
Plan 1:300



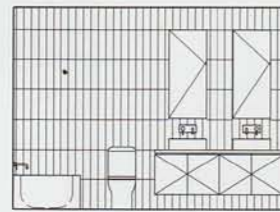
Kitchen plan 1:100



Kitchen elevations 1:100



Bathroom plan 1:100



Bathroom elevation 1:100

**PREVIOUS PAGES:** The heart of the kitchen is the island bench made from American oak stained to match the floor. **OPPOSITE PAGE:** The floating white vanity stands out against the acid yellow tiles of the bathroom walls.

**THE NEW EXTENSION DESIGNED** by architect Clare Cousins at the rear of a Californian bungalow in Melbourne puts the open-plan living space in the best position to soak up the sun, gain direct access to the garden and enjoy views of a tree-lined side street. A wall of full-height glazing, with three sets of double doors opening onto a curving deck, floods the interior with sunshine. The extension also incorporates two extra bedrooms for the owners' twin daughters at one end, and an adjoining sunny playroom, separated from the main living zone by a family bathroom.

The extension is characterized by the bright and breezy nature of the interiors, with a slightly retro twist. The bathroom features a pale taupe tiled floor and a floating white bench supporting twin rectangular basins, set against a backdrop of acid-yellow wall tiles – to complement the mossy green colour of the carpet in the children's bedrooms. It's a well-planned space that also accommodates a freestanding bath and a separate shower, with extra storage concealed in wall-hung mirrored cabinets centred above each basin. A vented skylight floods the room with natural light, and when the door is left open there are views across the passage and deck to the garden.

The kitchen, tucked into the corner of the L-shaped living area, is a warm mix of materials, with a large, centrally located, square island bench. Clad in American oak and stained to match the timber floor, the island bench is topped with a white factory-poured concrete slab that overhangs one side to provide a seating area. Behind it is a floor-to-ceiling box housing the fridge and a walk-in pantry. Constructed in horizontally grooved eco-panel plywood painted a deep olive-brown (Dulux 'Namadji') on the outside and black inside, the box provides a contrasting darker foil to the lighter elements.

Along the other wall is a bench of clean white joinery fitted with a stainless steel top and incorporating the sink and a freestanding cooker. Above a white colour-backed glass splashback are open stainless steel shelves taking up half of the wall space, and a quarter of dark cupboards, painted to match the pantry joinery, occupying the remainder.

"The brief was for a large, practical kitchen with plenty of bench space for the client, who's a professional cook," says Clare. "The kitchen was conceived as a collection of volumes, rich in colour, connecting the living and dining spaces. The pantry's black interior is a good contrast to the client's eclectic collection of ceramics and cookware." **K+B**





**ARCHITECT**  
Clare Cousins Architecture and  
Interior Design  
140 Langford Street  
North Melbourne Vic 3051  
Tel: +613 9329 2888  
Fax: +613 9329 3800  
Email: cc@clarecousins.com.au  
Web: www.clarecousins.com.au

**PRACTICE PROFILE**  
An architecture and interior design  
practice specializing in residential and  
retail projects.

**PROJECT TEAM**  
Clare Cousins, Henry Tinsley,  
Rakel Johnson

**BUILDER**  
Bourke & Sons Constructions

**TIME SCHEDULE**  
Design, documentation  
5 months  
Construction 7 months

**PRODUCTS KITCHEN**  
**Internal walls** Eco-Panels, Dulux  
'Namadj' paint finish; Dulux 'Berkshire  
White' **Flooring** Tasmanian oak  
strip flooring, walnut stain **Joinery**  
Starfire toughened glass splashback,  
colourback Dulux 'Berkshire White';  
two-pack cupboards, Dulux 'Berkshire  
White'; two-pack satin finish overhead  
cupboards, Dulux 'Namadj'; American  
oak veneer on island bench, walnut  
stain; concrete island benchtop;  
stainless steel benchtops and  
shelves **Lighting** Masson for Light  
Beama surface-mounted downlights  
BMSM100F **Sinks and tapware**  
Zucchetti pan sink mixer from Mary  
Noall; custom stainless steel sink  
moulded into benchtop **Appliances**  
Asko fully integrated dishwasher;  
five freestanding six-burner stove;  
Qasair rangehood; Fisher and Paykel  
easy-clean stainless steel refrigerator;  
all from Mary Noall **Windows and  
doors** Black powdercoated aluminium  
Capral frames, double-glazed clear  
glass **Furniture** Temperature Design  
sofas and custom upholstery;  
vintage table and chairs

**PRODUCTS BATHROOM**  
**Internal walls** Signorino Tile Gallery  
TGR B Mostardo 100 x 300 ceramic  
tiles **Flooring** Massa Imports 'Gallieu  
Crema' Nat. 300 x 600 porcelain  
tiles **Joinery** Laminex 'New Antique  
White', #204 Flint finish **Lighting** Inlite  
Nova 360 recessed downlights with  
gimbal in white **Tapware and fittings**  
Zucchetti wall-mounted basin set  
and mixer without back plate, #ZU/  
ZP6033 from Mary Noall **Sanitaryware**  
Gemini rectangular vessel #GE/  
J91103 from Mary Noall **Windows  
and doors** Dulux 'Berkshire White'  
satin finish interior enamel paint

**THIS PAGE:** A floor-to-ceiling box  
contains the refrigerator and the  
adjacent pantry.