

WINNER

House Alteration and Addition under 200 m²

Baffle HOUSE

by Clare Cousins Architects

• MELBOURNE, VIC •

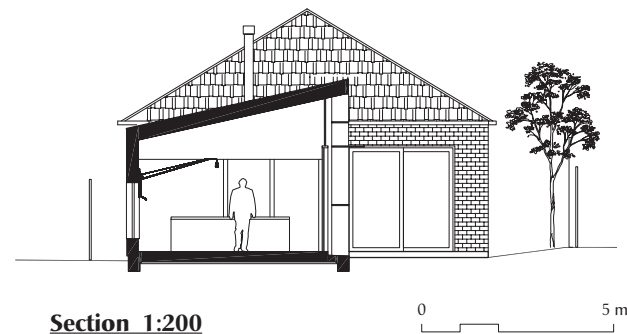
This simple addition to the rear of an Edwardian cottage in Melbourne integrates delightfully with both the existing bungalow and the garden area. The north-facing addition makes use of a baffle device to protect the house from the sun and as a transition to the garden space surrounding it. As well as acting as a sun regulator, the baffle casts dramatic shadows throughout the day.

The garden has been treated as an artwork that serves to bind the new addition and the older cottage. The scale of the addition sits happily with the existing building and the new spaces within are modest in size – yet the light-filled new living area acts as a joyous counterpoint to the rest of the house. The addition, with its light skeletal framework, is a distinct contrast to the brick-and-shingle cottage. The garden context skilfully shapes the perception of the house and the experience of the spaces within.

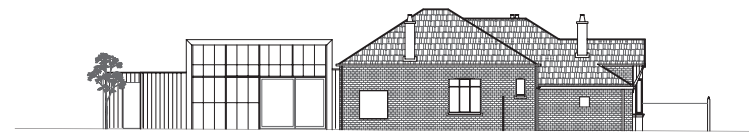
From the Houses Awards jury.

Award for House Alteration and Addition under 200 m² is supported by

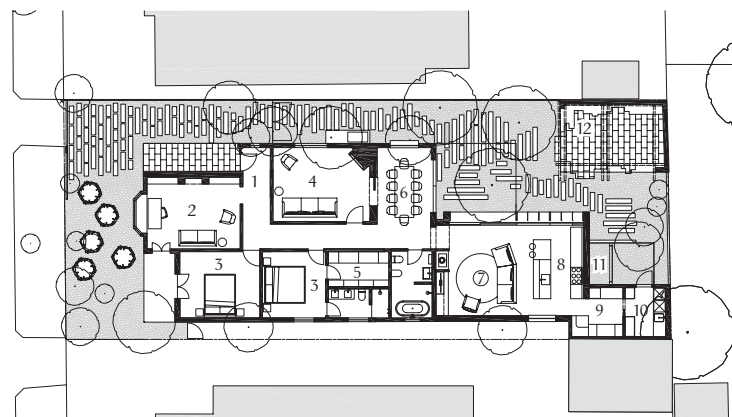
ASKO
Inspired by Scandinavia



Section 1:200



North elevation 1:400



Plan 1:400

- | | |
|----------------|--------------------|
| 1 Entry | 7 Living |
| 2 Study | 8 Kitchen |
| 3 Bedroom | 9 Pantry |
| 4 Lounge | 10 Laundry |
| 5 Walk-in robe | 11 Shed/dog kennel |
| 6 Dining | 12 Pergola |





Architect

Clare Cousins Architects
28 Blackwood Street
North Melbourne Vic 3051
+61 3 9329 2888
studio@clarecousins.com.au
clarecousins.com.au

Practice profile

Clare Cousins Architects creates houses that bring delight to everyday living, focusing on quality, longevity and materiality.

Project team

Clare Cousins, Oliver Duff,
Candice Chan, Jacky Chan

Builder

CBD Contracting Group

Consultants

Engineer: Co-Struct

Landscaping:

Eckersley Garden
Architecture, Vivid
Landscapes

Steel contractor:

I & H Webb

Photographer

Lisbeth Grosmann

